

Manual monorail : 700 Series

Description

The overhead manual monorail 700 series conveyor, can receive trolleys, carriers or load bars. For loads as postal bags, laundries, etc. the manual monorail 700 series can also be used in gravity conveyor. For long sections to motorize, the manual monorail 700 series can be equipped with a drive chain. See overhead power and free conveyor 2700 series.



Basic trolley



Simple trolley

Specifications

Rail section height 40mm x width 40mm x thickness 3mm.
The trolley has 4 carrier wheels with steel bearings and 2 side wheels with steel bearings
Maximum temperature 250°C.
Maximum load for 1 trolley : 25 KG - 50 KG

Components

- + Track
- + Curve
- + Switch
- + Turntable
- + Motorization
- + Retractable track
- + Drop section

Specific equipment can be made on request.

For example : integration of special lifting systems, weighing, load bars for transported parts etc.

INFORMATION

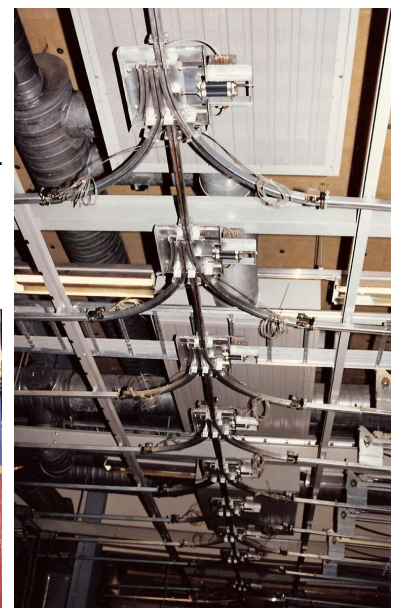
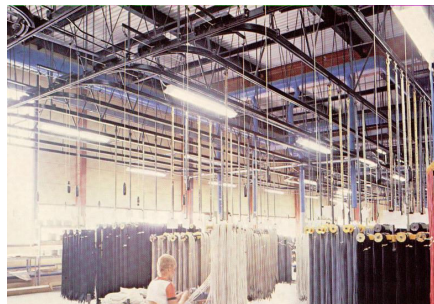
This manual monorail can be also organized as conveyor travelling bridge crane



Assembly conveyor

As for all CONVOYNORT conveyors, delivered components will be assembled on site to each other by bolting, according to the provided assembly drawing. So assembly's opérations are reduced.

Realizations



Convoynort

Headquarters : 625 rue du pont de pierres F- 62400 BETHUNE

Phone : +33(0)3 21 57 53 56 Fax : +33(0)3 21 57 51 07 mail@convoynort.com www.convoynort.com

