

Manual monorail : 500 Series

Description

The overhead manual monorail 500 series conveyor, can receive trolleys, carriers or load bars. For loads of type postal bag, laundries, etc. the manual monorail 500 series can also be used in gravity conveyor. Some areas of the manual conveyor can be motorized with side motorizations. For longer sections to motorize, the manual monorail 500 series can be equipped with a drive chain. See overhead power and free conveyor 3000 series.

Specifications

Rail section height 68mm x width 60mm x thickness 4mm
The trolley has 4 carrier wheels with steel bearings and 2 side wheels with steel bearings.
Maximum temperature : 250°C.
Maximum load for 1 trolley : 250 KG
Stainless steel on demand. See manual monorail stainless steel.

Components

- + Track
- + Curve
- + Switch
- + Turntable
- + Motorization
- + Motorized trolley
- + Retractable track
- + Drop section

Specific equipment can be made on request.

For example : integration of special lifting systems, weighing, load bars for transported parts etc.

Assembly conveyor

As for all CONVOYNORT conveyors, delivered components will be assembled on site to each other by bolting, according to the provided assembly drawing. So assembly's opérations are reduced.

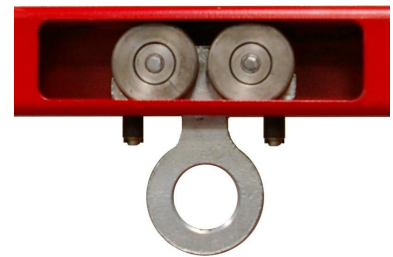
Realizations



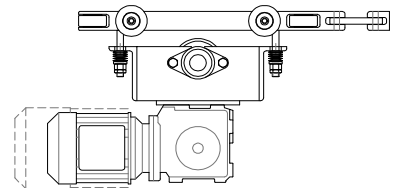
Basic trolley



Short trolley



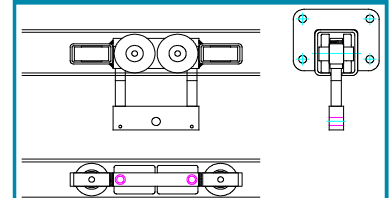
Hoist trolley



Motorized trolley

INFORMATION

For some cases, like lateral efforts received by the manual monorail 500 series, trolleys can be fitted with 2 extra horizontal wheels.



reinforced trolley

This manual monorail can be also organized as conveyor travelling bridge crane.

Convoynort

Headquarters : 625 rue du pont de pierres F- 62400 BETHUNE

Phone : +33(0)3 21 57 53 56 Fax : +33(0)3 21 57 51 07 mail@convoynort.com www.convoynort.com

